

COLOR IMAGE SCANNER

EPSON
EXCEED YOUR VISION

EPSON EXPRESSION™ 10000 XL



IMAGING REVOLUTION
PROFESSIONAL A3+ SIZE FLATBED COLOUR SCANNER



COLOR IMAGE SCANNER

EPSON EXPRESSION™ 10000 XL



Fulfill your exacting graphics art demands. Recognise that a high 2400dpi resolution with 6-lines CCD, Auto Focus; stunning speed with all-in-one moving carriage; and high optical density of up to 3.8 makes the difference between a normal scan and the professional scan that you need. Increased productivity, improved images and greater versatility are yours with EPSON Expression™ 10000XL for quality imaging that impresses.

Supreme Scan Quality and Accuracy

High-definition 2400dpi, A3+ scanning

Images with superb detail and quality are produced from the 6-lines CCD.

Richer Colour Gradation

Optical Density up to 3.8 means you get higher gradation reproduction resolution.

No 'Ghost' phenomenon

Avoid the 'ghost' phenomenon and be assured of quality and accurate images. All thanks to the protection rendered to the CCD by the anti-reflection coated cover glass.

Excellent Image Clarity

With Micro-Step Carriage Drive, the optical carriage is moved in ultra-high precision micro-steps sub-scan to produce clearer images.

Unquestionable Reliability and Easy Maintenance

An all-in-one moving carriage encapsulates all the lamps, mirrors, lens and CCD for extreme reliability of up to 100,000 scans, protects the mechanism from dust and lightens the scanner.

Impeccable Sharpness with Auto-Focus Feature

An Auto Focus optics system activated from EPSON Scan automatically adjusts and focuses to get the optimal pinpoint focus for clearer sharper scan.



Without Auto Focus



With Auto Focus

Professional Freedom with Manual Focus

Have the freedom to exhibit professional creativity and judgment. Manipulate the scan just how you want it, with the manual focus option on EPSON Scan.

More Powerful Imaging

High quality scans are created with a larger pixel size of 5.5um and a longer CCD that makes a more thorough imaging.

Scan with Stunning Speed

Faster Scanning with Larger Pixel Size of 5.5um

High speed with high quality scanning is possible with EPSON Expression™ 10000XL as a lesser amount of light is required to capture enough electrical charge.

Dedicated High Intensity Lamp

Negative film scanning is speeded up for you, the busy professional. An additional new high intensity lamp produces a greater luminance and completes the scan faster.

Optimised Color Lamp

To further expedite scanning time for negative films, a bluish lamp is used to shorten the exposure time required.

Shorter Image Processing Time

For increased processing capability and reduced dependency on the computer's processor capacity, the powerful scanner comes equipped with Application Specific Integrated Circuit (ASIC) hardware built-in.



Zero Standby Time

Complete your work faster. The high-bright Xenon lamp starts up the scanner instantly without any warm-up time and lets you better meet the deadline for a rush job.

Productivity Boost with Optional Automated Document Feeder (ADF)

This option allows 100 pages of documents to be loaded and scanned sequentially from the feeder with no hassle at all.



USB 2.0 (High Speed) and IEEE1394 interface

Easily connectable to PCs or Macintosh® with Hi-Speed USB 2.0 or IEEE1394 Interfaces, these interfaces lets the computer and scanner work faster and seamlessly together.



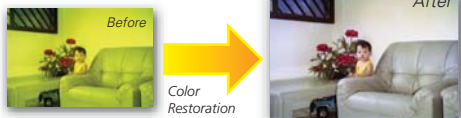
Sophistication that is Easy to Use

Flexibility with EPSON Scan Driver

Choose between Home, Professional and Office Mode for the usage style that is most suitable for your needs with the intuitive scan driver.

Array of Image Enhancement Tools

EPSON Expression™ 10000XL arms the image professional with multiple enhancement tools for use in their work. Immediate correction of defects on film and photo can be carried out with editing functions like Color Restoration, Dust Removal and Grain Reduction. Color Restoration restores discoloured or faded images from photos or films; Dust Removal eliminates dust noise automatically for films; while Grain Reduction reduces the 'sandy' and rough appearance of enlarged images from films by applying a filter that smoothen the image.

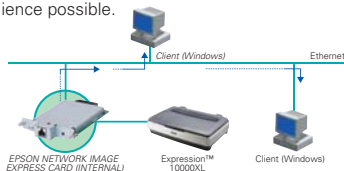


Variety of Film Formats

Capable of scanning a wide range of film formats, choose freely between 35mm strip film, 35 mm mounted film, 120/220 medium format film and 4x5" format film. The scanner comes with 2 units of film holders for each type of film formats.

Network Capability

Increase business efficiency with a scanner that can be connected to the Local Area Network (LAN) and shared by network users. The optional Network Image Express Card makes this convenience possible.

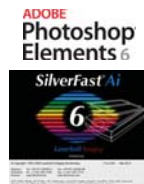


Compact Chassis with Smart Features

Packed into a compact chassis that makes better space utilization, the scanner comes with a Free Angle Hinge to enable ease of putting documents for scanning. An Auto-Release Carriage Lock makes it convenient to unlock and lock the carriage by just plugging in or taking out the power supply cable.

Bundled Software

Bundled software that helps your work includes Adobe Photoshop Elements 6.0, for hobbyist image editing; and LaserSoft SilverFast Ai 6, a high-end imaging software.



Revolutionise Digital Imaging with EPSON Expression™ 10000XL

Unbeatable in quality and functionality, this scanner brings you higher productivity and business efficiency and is the ultimate answer to your professional imaging needs.



SPECIFICATIONS

BASIC		
SCANNER TYPE	Flatbed A3+ colour image scanner	
SUB-SCANNING METHOD	Movement of the carriage	
PHOTOELECTRIC DEVICE	Alternative 6 line CCD (94,500 pixels)	
DOCUMENT SIZE	FB: 12.2 x 17.2 inches (310 x 437mm) ADF: 11.7 x 17.0 inches (297 x 432mm) TPU: 12.2 x 16.5 inches (309 x 420mm)	
LIGHT SOURCE		
OPTICAL RESOLUTION	Xenon gas fluorescent lamp Main: 2,400dpi (optical resolution by 6 line CCD with 87,840 pixels) Sub: 4,800 dpi with Micro Step	
OUTPUT RESOLUTION		
ZOOM	50 dpi to 12,800 dpi (in 1 dpi step)	
PIXEL DEPTH	50% to 200% (in 1% step) In 16 bit / pixel Out 1-16 bit / pixel	
SCANNING SPEED		
REFLECTIVE DOCUMENT		
LINE ART *1	1,200dpi	2.7 msec/line
	2,400dpi	5.3 msec/line
GRAYSCALE *1	1,200dpi	2.7 msec/line
	2,400dpi	5.3 msec/line
COLOUR *2	1,200dpi	8.0 msec/line
	2,400dpi	16.0 msec/line
TRANSPARENCY DOCUMENT		
POSITIVE FILM	16.0 msec/line	
NEGATIVE FILM	16.0 msec/line	
IMAGE PROCESSING FUNCTIONS		
GAMMA CORRECTION		
	CRT 2 Level (A, B) Printer 3 Level (A, B, C) User Defined Table	
COLOUR CORRECTION		
	Impact-Dot Printer Thermal Printer Inkjet Printer CRT Display User Defined Matrix	
BRIGHTNESS		
LINE ART	7 Level Fixed Threshold	
DIGITAL HALFTONING		
	TET (Text Enhanced Technology) Error Diffusion (A, B, C) Dither (A, B, C, D) User Defined Dither (A, B) AAS (Auto Area Segmentation)	
AREA SEPARATION		
SUPPORTED PLATFORMS		
USB 1.1	Microsoft® Windows® 98/Me/2000 Professional/ XP Home Edition/ XP Professional (Pre-installed model or upgrade of Windows® 98/Me/2000 Professional pre-installed model) Mac OS® 9.1 or later, Mac OS® X 10.2 or later	
USB 2.0 HIGH-SPEED	Microsoft® Windows® XP Home Edition/XP Professional/2000 Professional (Pre-installed model or upgrade of Windows® 98/Me/2000 Professional pre-installed model) USB2.0 Host Driver by Microsoft is required Mac OS® X 10.2.7 or later Microsoft® Windows® Me/2000 Professional/ XP Home Edition/XP Professional Mac OS® 9.1 or later, Mac OS® X 10.2 or later	
IEEE1394	Microsoft® Windows® Me/2000 Professional/ XP Home Edition/XP Professional Mac OS® 9.1 or later, Mac OS® X 10.2 or later	
INTERFACE		
	USB2.0 High-Speed* (standard) IEEE 1394 (standard) Optional Slot	
ENVIRONMENTAL CONDITIONS		
TEMPERATURE		
	5°C to 35°C (operating) -25°C to 60°C (storage)	
HUMIDITY		
	10% to 80% without condensation (operating) 10% to 85% without condensation (storage)	
ELECTRICAL SPECIFICATIONS		
VOLTAGE		
	Universal Power Supply AC220-240V	
FREQUENCY		
POWER CONSUMPTION		
	50 to 60Hz Approx. 45 W (operating without Option unit) Approx. 55 W (operating with Option unit) Approx. 5.5 W (Sleep mode without Option unit)	
OPTIONS		
AUTO DOCUMENT FEEDER	B12B613213	
NETWORK IMAGE EXPRESS CARD	B12B808392	
A3 TRANSPARENCY UNIT	B12B613363	

* The vendor of the Host must ensure the functionality of the USB ports.



EPSON EXPRESSION™ 10000XL
Weight=Approx. 14.5kg

To use the USB port, your PC must conform to PC98 specifications, and have Windows® preinstalled. Consult the documentation provided with your PC for further information about USB connectivity. Note also that printing errors may occur if non-standard cables or more than two hub connections are used.

Scanning Speed Data Patterns

The thumbnail images below show the scanning patterns used to determine scanning speed specifications.

System Configuration of Scanning Speed

CPU: Pentium 1.5GHz
RAM: 512MB
OS: Windows 2000
Soft: Adobe Photoshop 6



*1
Line Art
(MEMO)



*2
Photo
(Photo courtesy of ISO/JIS-SCID. Reprinted by permission.)

Scanning speed test results vary according to system configuration, dpi setting, and scan mode setting. However, documents and photos other than those pictured above can be substituted without significantly affecting test results.

EPSON is the registered trademark of SEIKO EPSON CORPORATION.
Silverfast is a registered trademark of LaserSoft Imaging, Incorporated.
All other product names and other company names used herein are for identification purpose only and may be the trademarks or registered trademarks of their respective owners.
EPSON disclaims any and all rights in those marks.
Scan/Print samples shown herein are simulations.
Specifications are subject to change without notice.

EPSON
EXCEED YOUR VISION